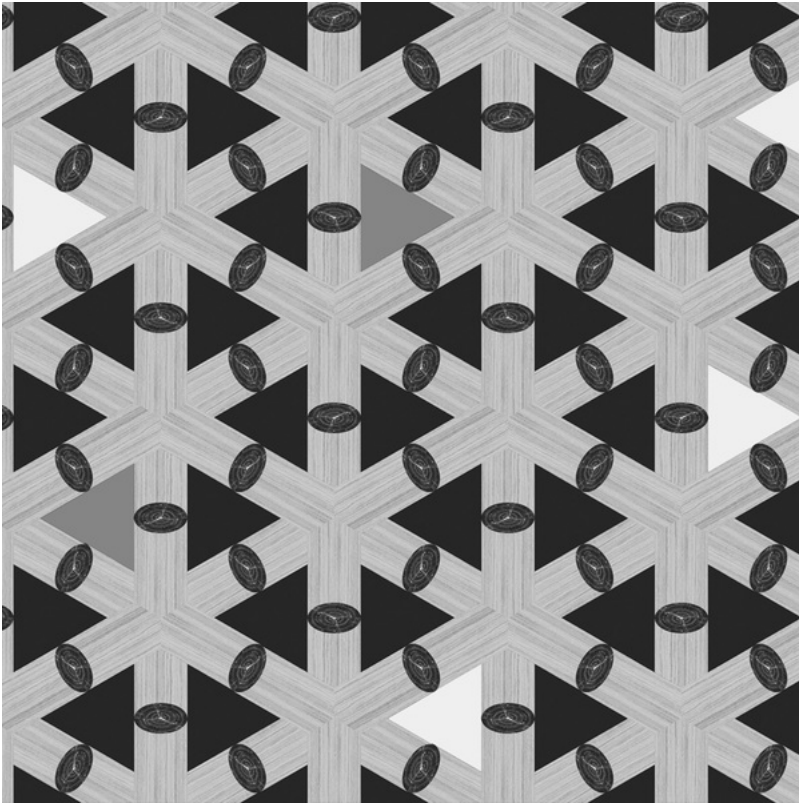


astek

PRODUCT
SPEC SHEET



LINCOLN LOGS • GRAPHITE / AD026-2

MATERIAL: Matte Vinyl (Type II)

BACKING: Non-woven

VERTICAL REPEAT: 18.5 inches

MOTIF WIDTH: 40 inches

REPEAT MATCH TYPE: Straight

PRINTED WIDTH: 40 inches

WASHABILITY: Washable

FIRE RATING: Class A

PRINT TYPE: Digital Print

MARGIN TRIM: Untrimmed

PRINT TO ORDER: Yes

FOB Van Nuys, CA 91406

All wallcoverings are delivered untrimmed.

Overlaps for double cutting are included unless otherwise requested.
Lead times dependent on quantity ordered, as product is made to order.

Approved strike off required prior to production.

Contact your sales rep to initiate a strike off request.